

***Thank you for partnering in the shared ministries of the EMMC!***

Are you willing to “**Give up** to **give UP**?” Strange way to open an update letter right? “**Give Up**” is not supposed to be in our vocabulary, but it is in the context of our relationship with God. Are we willing to **give up**, to **GIVE UP**? The life of a disciple is one of surrendering one’s own will (**Give up**) to Jesus and what he would have us do. He tells us, there is a cost: “**Whoever wants to be my disciple must deny themselves and take up their cross and follow me. For whoever wants to save their life will lose it, but whoever loses their life for me and for the gospel will save it**” (Mark 8:34- 35). **Giving up** our lives to Jesus, means we will give our time, our talents and our treasure up to Him for His use and His purpose.

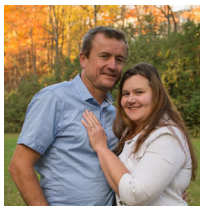
***When you partner with us financially, you are **GIVING UP** some of your treasure. We Thank you!***

***When you partner with us in prayer, you are **GIVING UP** some of your time. We thank you!***

When you partner with us by joining physically in the ministries within your local church or in our shared EMMC ministries, you are **GIVING UP** some of your time, your talent and your treasure. We thank you!

God, through His Holy Spirit is prompting many to roll up their sleeves and ask, “What is God doing now, and what is the cost of obediently getting on God’s mission?”. We are so grateful that God is giving us, His disciples, the opportunity to join Him in His work. He has called us to **give up**, so that we can **Give UP**.

***Here’s a glimpse of what we are seeing:***



As a result of your financial gifts and prayers, we were able to assure new missionary couple to Bolivia - Ben and Bertha Kauenhofen of Alymer EMMC - that “**If you leave comfort of your home, your family and your business to go to a foreign country and give yourself to the Kingdom work of God, we will look after your financial needs.**” Ben and Bertha have joined the team of MEM missionaries, which included Abe and Margaret Harder (Alymer EMMC) and Irna Dyck (Blue Creek EMMC) as we look to reach out into new communities in Bolivia with schools and new church plants. Our missionaries share of the miraculous ways God has been opening doors. These missionaries have given Up their time, talents and treasure; what would you be willing to “**Give UP**” to help us continue to look after their financial needs?

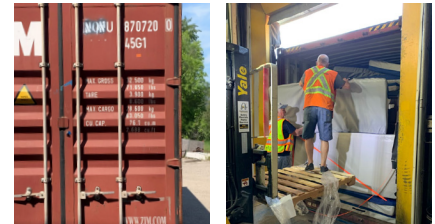
With your help we have been able to encourage post-secondary students from our EMMC Churches that “**If you plan to go to school and use your education and your passions to further God’s kingdom, we will help!**”. In 2021 you helped us assist 27 students with Education Bursaries of over \$18,000. As a new school year is about to begin, the applications are rolling in. These students are **giving UP** their time and treasure to further their education and improve their talents, what would you be willing to “**give UP**”, to help us assist in the discipleship of our students?





With your help we have been able to provide our congregations with resources ranging from Leadership workshops, to Equip: A Discipleship Pathway, to one on one coaching and support. Thousands are being resourced. Our Churches have been asking for discipleship resources, leadership skills training and pastoral help, and we've been able to answer... "Yes!". Our goal is to equip, encourage and empower our churches for the work God has called them too. We need to fill our leadership pipeline of pastors and leaders. We are finding that people are willing but sometimes they don't feel equipped. What would you be willing to "**give UP**", to help us resource our congregations and continue to say "YES!".

Recently we became aware of a company in BC who had Medical Equipment (Enough to fill a shipping container) available for free, if it was distributed to needy clinics at no cost. We have clinics in our communities in Bolivia that will make use of it. What a blessing! Our only cost is the shipping. \$20,000 US is needed. Are you willing to "**Give UP**" some treasure to help?



We ended 2021 with a financial surplus of about \$14,000 and for that we are grateful. The reality is also that, as of July 2022, we are running a deficit of about \$65,000. This is not unusual for this time of year, but it is something we are aware of and continue to pray about.

**As you prayerfully consider a financial gift**, we also ask that you would continue to pray and intercede to God on behalf of our conference's shared ministries. The work we are a part of could not happen without your gift "**Given UP**" for His glory under a momentum of prayer.

**Join us in "Giving Up so that we can Give UP". May we be surrendered to His glory and His purpose!**

Lyn Dyck,

Executive Director

**Give by cheque, payable to EMMC, 757 St. Anne's Road,  
Winnipeg MB R2N 4G6 or Online at [emmc.ca/donate](https://www.emmc.ca/donate)**

Head to [www.emmc.ca](https://www.emmc.ca) for more stories and resources.